

96906

CERATELLA

General Information

Article: 96906
 Lighting Type: table luminaire
 EAN Code: 9002759969066

Dimensions

Height: 310 mm
 Ø: 65 mm
 Base Ø: 120 mm
 Weight: 0.882 kg

Illuminant

Socket: GU10
 Illuminant: GU10-LED
 Delivery: incl.
 Wattage: 1x 5W
 Luminous Flux: 1x 400 lm
 Luminous Colour: 3000K warm white
 Average Lifetime: 15,000 h
 Colour Rendering Index: >80 Ra
 Energy Efficiency: A+
 Suitable for: A++ - B
 kWh/1000: 5.00
 Info on Dimmer: [more Information](#)
 Info on Recycling: [more Information](#)

Detailed Information

Material & Colour

Enclosure Material: steel
 Enclosure Colour: satin nickel, shiny white

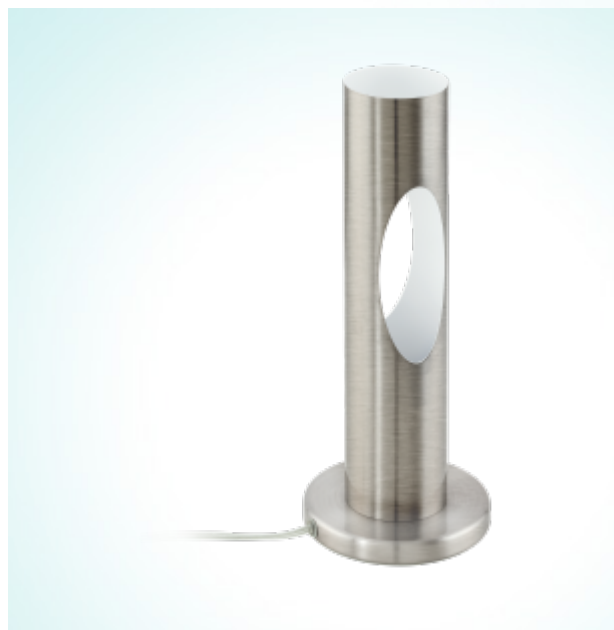
Functionality

Switch: in-line switch

Technical Information

Protection Class: 2
 Line Voltage: 220-240V,50/60Hz
 Operation Voltage: 220-240V,50/60Hz

LED



Technical changes reserved